



# Muskoka

## Folding Glass Wall System



**Bringing the great outdoors in!**

# Engineered Elegance

Providing comfort and convenience, the Muskoka lets you experience more of the great outdoors whenever you like.

Whether it's more light, fresh air, or simply the freedom to walk in or out as you please, the Muskoka will add an exciting new dimension to your home, cottage, or commercial property.





# Premium Performance

## System Features

- Robust vinyl panels reinforced with heavy gauge aluminum
- Integrated structure connected with patented corner key system for exceptional rigidity
- Encased in a welded PVC skin for superior thermal performance
- Low maintenance threshold stays clean by reducing dirt collection at the primary panels
- "Soft-close" automotive gasket system
- Highest attainable air and water resistance
- Stainless steel hardware for advanced corrosion resistance
- Reinforced polymer wheels
- Easy adjustment "auto locking collar"
- Patented in-line pivot system



## Physical Characteristics

- Ease-of-use with equal sized panels
- Maximum panel weight: 220 lbs (100 kg)
- Maximum panel height: 9'10" (3.0 m)
- Maximum panel width: 3'3" (1.0 m)
- Panel thickness: 1.625" (41.3 mm)
- Maximum panels: 8
- Maximum opening: 21' (6.4 m)
- Air leakage rating: A3-0.1 L/sm<sup>2</sup>
- Water penetration resistance: 720 Pa (15 psf)
- Design pressure: 2400 Pa (50 psf)

# Built for Durability

## **Corner Key Technology: Exclusive Sunview Design for Optimal Strength**

Corner welds can be critical stress points for premium patio doors. This is even more important with heavier products in high-use environments.

To ensure the Muskoka stands up to the test of time, Sunview uses patented corner key technology designed and imported from Italy.

Since our corner keys are precisely engineered with high-grade aluminum, they prevent doors from shifting or sagging over time.



# Hardware & Options



## Standard Lock Handle Set

A unique handle set with integrated key locks. Available in White, Black, Satin Nickel, Polished Brass or Oil Bronze. Hinges and other hardware will have a brushed metal finish.

**Multi-point Lock.** A heavy-duty, stainless steel locking system which provides six locking points on the door frame, comes as standard hardware.

## Optional Internal Mini-Blinds

From full visibility to complete privacy - raise, lower or tilt the mini-blinds. Sealed between the insulated glass for worry-free operation.

- Fingertip controlled
- No external cords
- No dusting needed
- Low-E glass

*\* Limited sizes available*



## Optional Screens

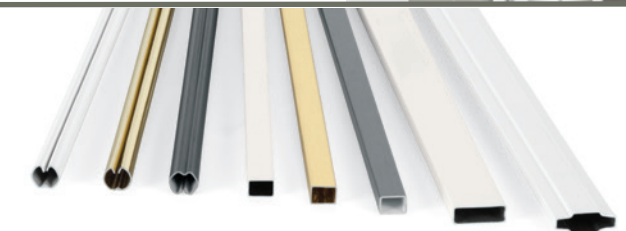
Pleated retractable screens let in the fresh air without the pests.



## Glazing

Outstanding thermal efficiency is realized with a high-performance glazing unit utilizing the most advanced **Low-E** glass, and argon gas-filled **Super Spacer®** technology.

*Super Spacer®*

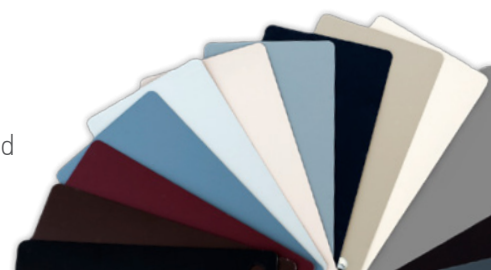


## Optional Decorative Grills

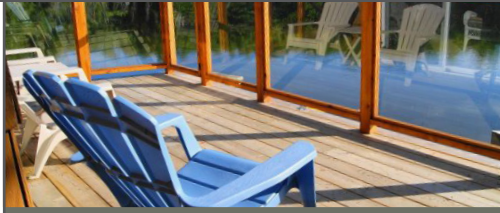
Internal grills are available in a wide range of design styles with colours that include **Flat Grills** in two-tone, white, brass and pewter, **Georgian Grills** in white, and **Pencil Grills** in white, brass and pewter.

## Optional Exterior Colours

The Muskoka boasts a wide range of standard and customized colour options that feature a finish which is UV stable, has a superior adhesion process and is impact resistant.

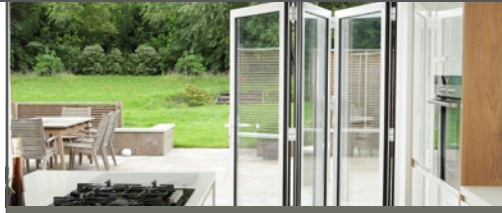


# Range of Applications



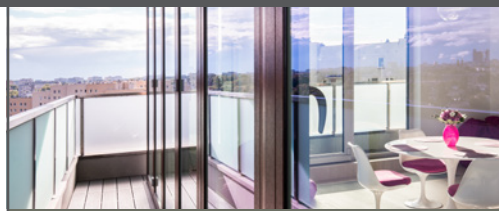
## Cottages and Resorts

As the name implies, a perfect place to enjoy the Muskoka Folding Glass Wall System is in a beautiful outdoor setting. It's the ultimate way to connect with nature either alone or while entertaining guests.



## Residential Homes

Home backyards, decks, patios and other entry points are ideal for the Muskoka. It offers more light, fresh air, and accessibility. The open concept makes it feel like being on vacation in your own home.



## Luxury Condominiums

The Muskoka adds elegance and value to upscale condominiums. When space is at a premium, the folding glass wall system naturally transforms a balcony or terrace into an extended living space.



## Hospitality Industry

Businesses where outdoor seating or gathering areas play vital roles in attracting customers, are ideal "fits" for the Muskoka. Restaurants, meeting halls, pubs, night clubs and hotels are typical examples.



## Indoor Partitioning

Making better use of indoor space is another practical application for the Muskoka. Perfect for day cares, training facilities, offices, and other types of commercial use. Ideal for flexibility in the home as well.

# Configuration Options

The Muskoka is available in a variety of different configurations designed to meet almost any need. Choose from the standard configurations shown below, or we can create a custom solution to meet your exact requirements.

## 3 Door Options



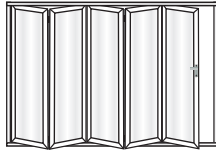
3 doors fold in one direction

## 4 Door Options



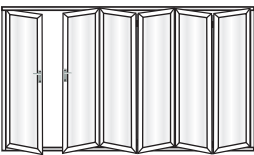
3 doors fold in one direction, 1 swings in opposite direction

## 5 Door Options



5 doors fold in one direction

## 6 Door Options

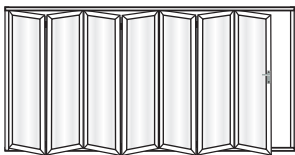


5 doors fold in one direction, 1 swings in opposite direction



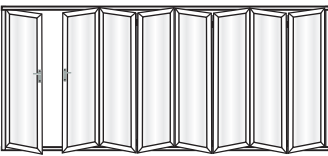
3 doors fold in one direction, 3 fold in opposite direction

## 7 Door Options



7 doors fold in one direction

## 8 Door Options



7 doors fold in one direction, 1 swings in opposite direction



5 doors fold in one direction, 3 fold in opposite direction





**The Muskoka Folding Glass Wall System.  
Bringing the great outdoors in.**

Distributed by:



Our products meet the ENERGY STAR® program guidelines to help protect the environment through superior energy efficiency.